



# MONTHLY MEMBERSHIP PROGRESS REPORT

District 5 NW

Results as of: 10/31/2017

GMT: MICHAEL MOLENDIA

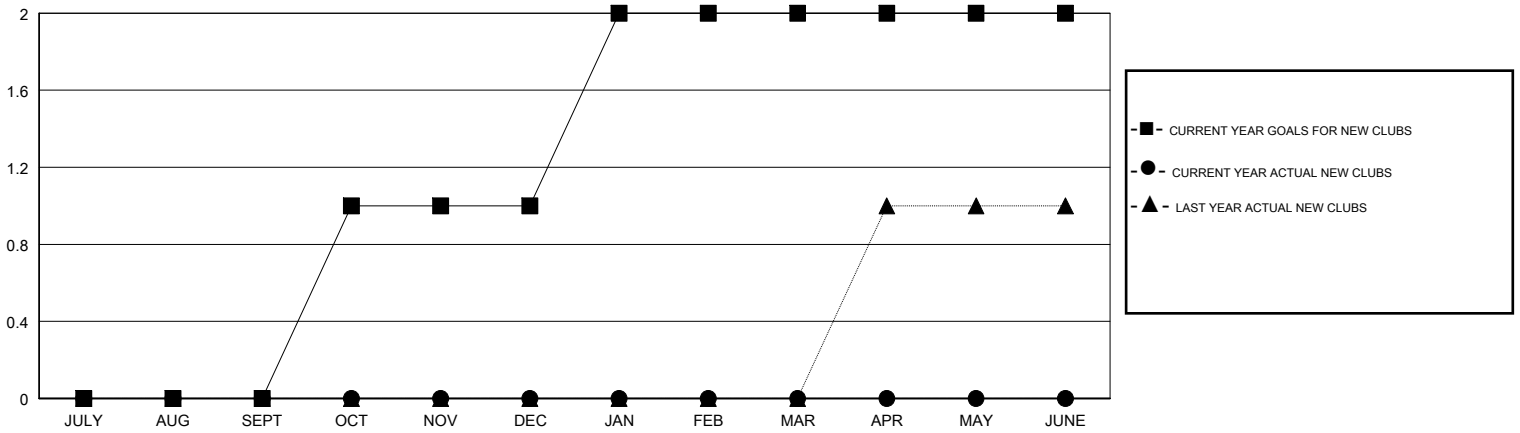
LOCATION NORTH DAKOTA

GMT CA

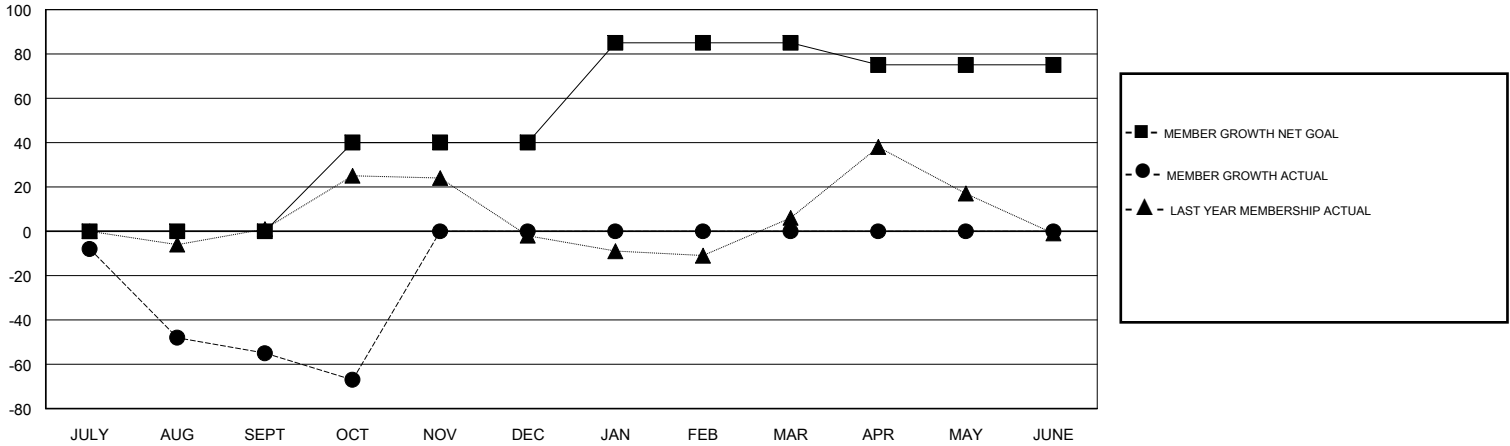
| Clubs                 |               |           |               |
|-----------------------|---------------|-----------|---------------|
| RESULTS FOR 2017-2018 |               |           |               |
| QUARTER               | NEW CLUB GOAL | NEW CLUBS | DROPPED CLUBS |
| JULY/AUG/SEPT         | 0             | 0         | 0             |
| OCT/NOV/DEC           | 1             | 0         | 1             |
| JAN/FEB/MAR           | 1             | 0         | 0             |
| APR/MAY/JUNE          | 0             | 0         | 0             |

| Members               |                        |                      |  |
|-----------------------|------------------------|----------------------|--|
| RESULTS FOR 2017-2018 |                        |                      |  |
| QUARTER               | MEMBER GROWTH NET GOAL | MEMBER GROWTH ACTUAL | DROPPED MEMBERS ACTUAL (including transfers) |
| JULY/AUG/SEPT         | 0                      | 31                   | 71   |
| OCT/NOV/DEC           | 40                     | 8                    | 20   |
| JAN/FEB/MAR           | 45                     | 0                    | 0  |
| APR/MAY/JUNE          | -10                    | 0                    | 0  |

GOALS AND ACTUAL NEW CLUBS CUMULATIVE



GOALS AND ACTUAL MEMBERS CUMULATIVE



DROPPED CLUBS: 1

15 CLUBS OF 46 ADDED 1 OR MORE NEW MEMBERS

GENDER DISTRIBUTION

MALE 767 (63.81%)  
 FEMALE 435 (36.19%)  
 Women Percentage Fiscal Year Goal: 45%

DROPPED MEMBERS

[CLICK HERE FOR CUMULATIVE MEMBERSHIP DATA](#)

|                |           |
|----------------|-----------|
| DECEASED       | 10        |
| CLUB CANCELLED | 0         |
| OTHER          | 81        |
| <b>TOTAL</b>   | <b>91</b> |

|                                 |     |
|---------------------------------|-----|
| TOTAL FAMILY UNIT MEMBERS       | 237 |
| FAMILY MEMBERS PAYING HALF DUES | 120 |